



- ▶ **Passive (micro-tremor) and active source surface wave data analysis**
  - calculates phase velocity and plots dispersion curve
  - performs automated inversion to iteratively seek 1D S-wave velocity profile
  - allows active and passive source results to be combined into one high-resolution velocity plot
  - includes editing and QC functions, velocity modeling
  
- ▶ **Determine S-wave velocity for a variety of applications**
  - IBC Vs30 site classification
  - foundation engineering
  - void detection
  - in-fill and landfill investigation
  - stratigraphic and lithologic studies
  - deeper surveys of geologic structure
  
- ▶ **Wizard-driven operation for easy, straight-forward data analysis**

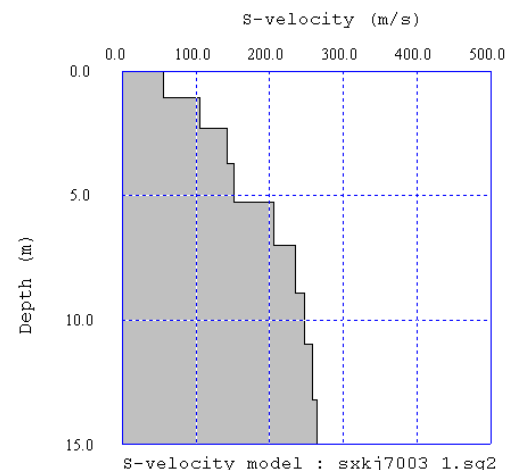
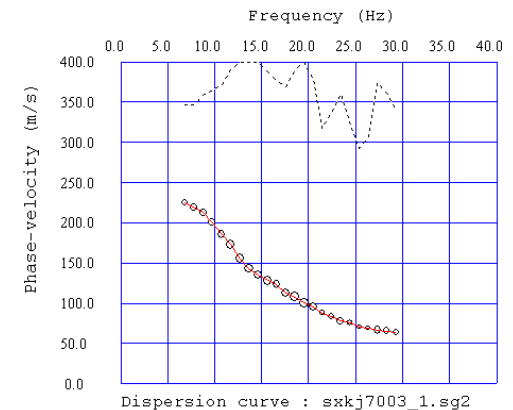
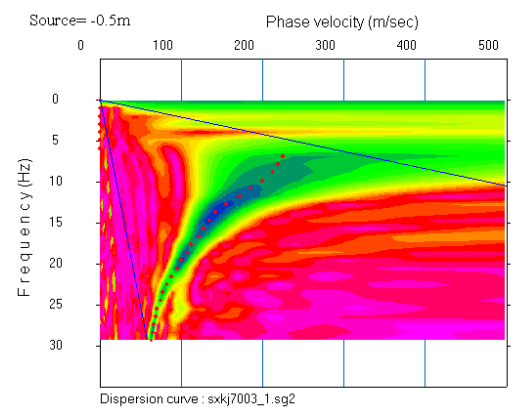
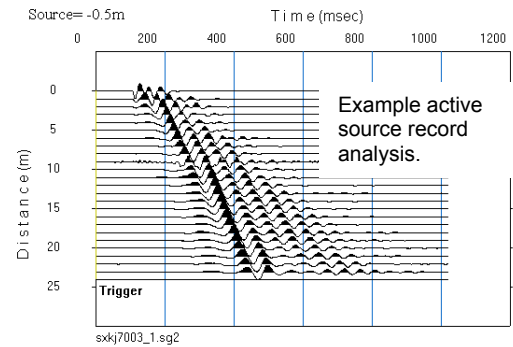
Surface waves are easy to record and loaded with information about the subsurface. With SeisImager/SW, data processing is simple, putting the answers you seek at your fingertips.

A typical dataset consists of one active source record and 20 passive or micro-tremor source records. Upon launching the software, a wizard walks you through the analysis. SeisImager/SW includes default parameters that are suitable for most cases, but are fully user-adjustable as needed.

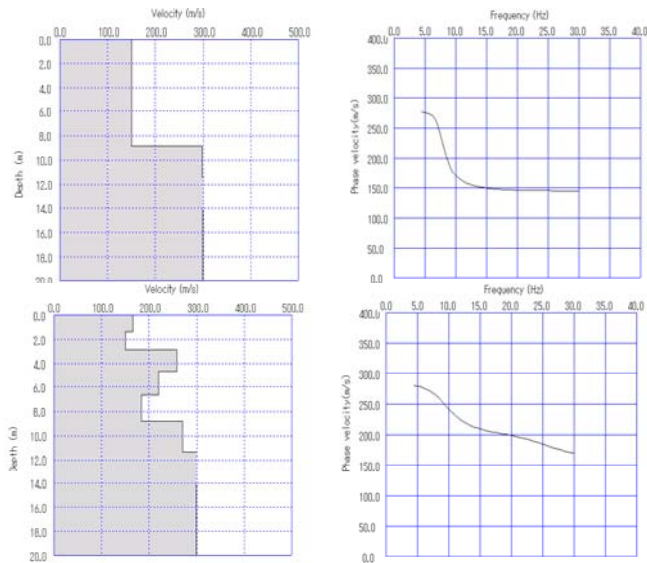
SeisImager/SW includes both active source and passive source data analysis capability. The higher frequency data from a sledgehammer source that travels through shallow depths can be combined with lower frequency data from micro-tremors that travel through greater depths. Combine the results for one high-resolution plot of S-wave velocity.

SeisImager/SW is now available for purchase separately or as an option with the Geometrics ES-3000, Geode, and StrataVisor NZ seismographs. The software comes standard with the specialized, low-priced ES-SW 16-channel seismograph package tailored for IBC Vs30 surveys.

Contact Geometrics at [sales@geometrics.com](mailto:sales@geometrics.com) for prices and to find out more about how SeisImager/SW can work for you.



# SeisImager/SW Surface Wave Analysis Software



With Geometrics seismographs, data acquisition is simple. For active source data, take one or two off-end shots with a 20-lb (9 kg) sledgehammer. In noisier environments, you can also stack multiple shots for increased signal-to-noise ratio. For passive or micro-tremor source data, manually trigger the seismograph to record 20 records of 30 seconds each.

SeisImager/SW is available for purchase separately or as an option with the ES-3000, Geode, and StrataVisor NZ seismographs. It comes standard with the specialized, low-priced ES-SW 16-channel seismograph package tailored for IBC Vs30 surveys. Please contact Geometrics, Inc. for complete details.

In addition to the main functions used to determine the S-wave velocity, SeisImager/SW also allows the user to build models and examine the effects of velocity variations. Borehole data such as P-wave velocities and blow counts (N-values) can also be correlated.

## SeisImager/SW Software Packages:

**Demonstration version:** for use on Windows PC with mouse, may be launched 15 times, capable of 1D active source Multi-channel Analysis of Surface Waves (MASW).

**1D version:** runs on Windows PC with mouse, capable of 1D passive Micro-tremor Array Measurements (MAM) and 1D active source MASW.

**2D version:** runs on Windows PC with mouse, capable of 1D passive MAM and 1D and 2D active source MASW. Note: not yet released, scheduled for late 2005.



~SeisImagerSW\_v4\_ds.doc 052005

## GEOMETRICS INC.

2190 Fortune Drive, San Jose, California 95131, USA  
Tel: 408-954-0522 – Fax: 408-954-0902 – Email: [sales@geometrics.com](mailto:sales@geometrics.com)

## GEOMETRICS EUROPE

Manor Farm Cottage, Galley Lane, Great Brickhill, Bucks MK17 9AB, UK  
Tel: 44-1525-261874 – Email: [chris@georentals.co.uk](mailto:chris@georentals.co.uk)

## GEOMETRICS CHINA

Laurel Industrial Company Inc., Beijing Office, Suite #2509-2511, Tower A, Full Link Plaza,  
#18 Chaoyangmenwai Dajie, Chaoyang District, Beijing 100020, China  
Tel: 86-10-6588-1126, 27, 28, 29, 30 – Fax: 86-10-6588-1162 – Email: [laurel@laureltech.com.cn](mailto:laurel@laureltech.com.cn)

